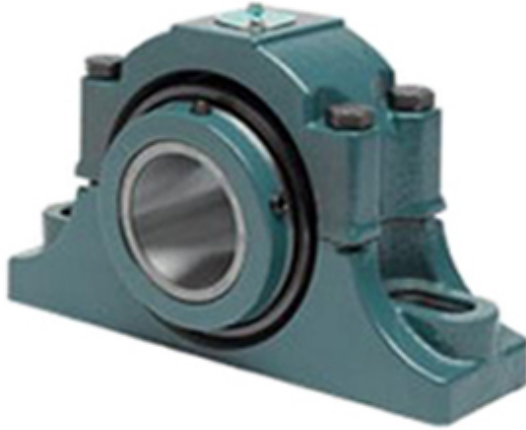




# ISO BEARING INDIA PRIVATE LTD.



1.875 Inch | 47.625 Millimeter x 3.5 Inch | 88.9 Millimeter x 2.25 Inch | 57.15 Millimeter DODGE P2B-EXL-114R Pillow Block Bearings

Bearing No. P2B-EXL-114R

P2B-EXL-114R Bearing 2D drawings and 3D CAD models

Category	Pillow Block Bearings
Inventory	0.0
Manufacturer Name	ABB MOTORS AND MECHANICAL INC
Minimum Buy Quantity	N/A
Weight	8.626
EAN	0782476587352
Product Group	M06288
Number of Mounting Holes	2
Mounting Method	Concentric Collar
Housing Style	2 Bolt Pillow Block
Rolling Element	Tapered Roller Bearing
Housing Material	Cast Iron
Expansion / Non-expansion	Non-expansion
Mounting Bolts	5/8 Inch
Relubricatable	Yes
Insert Part Number	S1U-EXL-114R
Seals	Triple Lip Contact
Housing Configuration	2 Piece Split
Inch - Metric	Inch
Other Features	Double Row   Double Collar   With Set Screw
Long Description	2 Bolt Pillow Block; 1-7/8" Bore; 2-1/4" Base to Center Height; Concentric Collar Mount; Tapered Roller



## ISO BEARING INDIA PRIVATE LTD.

	Bearing; 6.31" Minimum Bolt Spacing; 7.19" Bolt Spacing Maximum; Relubricata
Category	Pillow Block
UNSPSC	31171511
Harmonized Tariff Code	8483.20.40.80
Noun	Bearing
Keyword String	Pillow Block
Manufacturer URL	<a href="http://www.dodge-pt.com">http://www.dodge-pt.com</a>
Manufacturer Item Number	P2B-EXL-114R
Manufacturer Internal Number	077229
Weight / LBS	19
d	1.875 Inch   47.625 Millimeter
Actual Bolt Center to Center	0 Inch   0Millimeter
Bolt Spacing Maximum	7.19 Inch   182.626Millimeter
Nominal Bolt Center to Center	6.8 Inch   171.5 Millimeter
B	2.25 Inch   57.15 Millimeter
Bolt Spacing Minimum	6.31 Inch   160.274Millimeter
D	3.5 Inch   88.9 Millimeter